



Whitsun Regatta

27th-29th May 2017

One Design Racing over 3 days



A MESSAGE FROM THE COMMODORE

Dear Members

Welcome to the 2017 RBYC Whitsun Regatta. It is promising to be a memorable weekend of sailing and social events and I hope to see you all at the club!

The weekend forms part of our RBOD 85th Anniversary celebrations, and I look forward to you all helping with our festivities on the Sunday evening at the RBOD Class Party. This party is sponsored by a group of RBOD owners and given as a thank you to the RBYC for allowing us to hold our fundraisers in the club. It starts with free cocktails and canapes from 7pm (for those booked into dinner.) This will be followed by a two-course curry buffet for £16 a head, with a band playing afterwards. Booking is essential, so please either email info@rbyc.org.uk, sign up on the booking sheet in the bar or telephone 01621 782044.

Hopefully the sun will shine and deliver the Burnham Riviera weather we enjoy so much. The weekend is jam-packed with something for everyone in sailing and social arrangements.

There will be the usual keel boat racing fleets, promising strong representation by the RBODs and an ever-expanding Elite fleet.

One race on Monday concludes the sailing and, again, the opportunity to unwind with bar menu lunch in the club and a prizegiving after racing.

Finally I would like to thank all the committee members and members who have helped organise what I am sure will be a spectacular event.

Martin Smith
Commodore
Royal Burnham Yacht Club

This year we are planning the usual mix of racing from the RBYC Club line for the day boat classes.

There will be one race on Saturday afternoon, two on Sunday for the Dragons, Hunter 707s, Squibs and RS Elites, one on Sunday for the RCODs and RBODs. There will be one final race on the Monday.

Many of our Burnham Squib sailors will be away at the fleet's East Coast Championship in West Mersea, however we welcome those who would prefer to remain in Burnham.

We would ask all classes to note that some start times are not the same as the usual Saturday or Sunday racing. We have also published our times showing WARNING SIGNALS, in line with the recommendations of the RYA.

Schedule of Races (warning signals)

Saturday 27th May 2017	
<i>High water Burnham on Crouch 1429 hrs 5.5m</i>	
	1405 RS Elites (Race 1) 1415 Hunter 707 (Race 1) 1425 Dragons (Race 1) 1435 Squibs (Race 1) 1445 RCOD (Race 1) 1455 RBOD (Race 1)
Sunday 28th May 2017	
<i>High Water Burnham on Crouch 1515hrs 5.4m</i>	
1005 RS Elites (Race 2) 1015 Hunter 707 (Race 2) 1025 Dragons (Race 2) 1035 Squibs (Race 2) 1045 RCOD (Race 2) 1055 RBOD (Race 2)	1405 RS Elites (Race 3) 1415 Hunter 707 (Race 3) 1425 Dragons (Race 3) 1435 Squibs (Race 3)
Monday 29th May 2017	
<i>High Water Burnham on Crouch 1600hrs 5.3m</i>	
1005 RS Elites (Race 4) 1015 Hunter 707 (Race 4) 1025 Dragons (Race 4) 1035 Squibs (Race 4) 1045 RCOD (Race 3) 1055 RBOD (Race 3)	

Times given are the class warning signal, for a standard 5,4,1,0 sequence.

All races start from RBYC Line

Courses as displayed from the Race Box using the 2017 RBYC/RCYC course card

Social Programme

Friday 26th May 2017

Bar Open 12:00-15:00 and 18:00-01:00, Food Served 12:00-15:00

Live Music from 10pm

Unfortunately, no food available in the evening

Saturday 27th May 2017

Bar Open 12:00-01:00, Food Served 12:00-15:00 and 18:00-21:00

We will be serving our Bar Menu
as well as sandwiches, baguettes and paninis.

Whitsun Regatta Saturday House Dinner

Our annual dinner to celebrate the Whitsun Regatta.
Four course meal for £30 per head Bookings essential via the club

Sunday 28th May 2017

Bar Open 12:00-00:00, Food Served 12:00-15:00

We will be serving our Carvery and a selection of our bar meals as
well as sandwiches, baguettes and paninis.

Bookings recommended for the Carvery via the club

RBOD 85th Class Party

Cocktails and Canapes from 7pm (for those booked into dinner),
then a two-course curry buffet

Followed by live music from the Red House Groove Band

£16 per head

Booking essential via the club

Monday 29th May 2017

Bar Open 12:00-18:00, Food Served 12:00-15:00

Bank Holiday Lunch

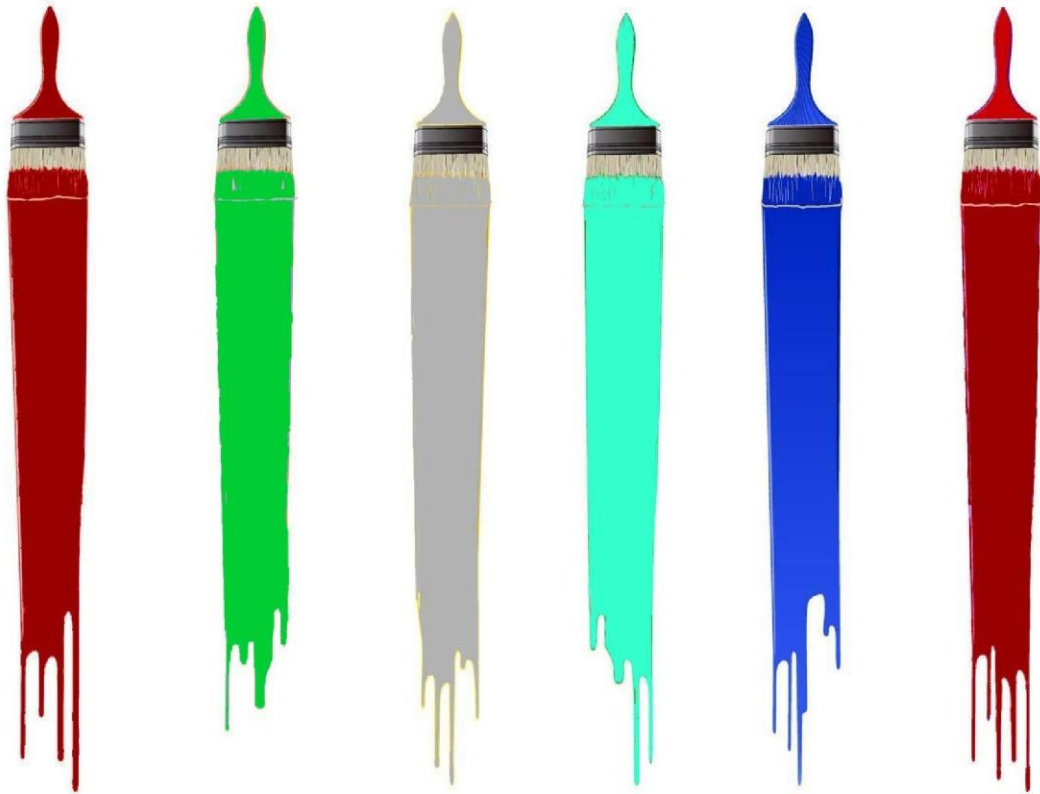
Our Bar Menu will be available 12:00-15:00

To make a booking

Please call 01621 782044 or email info@rbyc.org.uk Tuesday to Friday
or add your name to the booking sheets at the bar

The Owners of
**AQUAMARINE, BERYL, BLUEBELL,
JADE, ONYX & WHIMBREL**

*Cordially invite you to the
2nd of the RBOD Class 85th Anniversary Parties
on Sunday 28th May 2017*



*Please join them for Prosecco / Cocktails and Canapés
From 7.00pm at RBYC
Followed by a Curry Supper & Dessert £16
Please book with RBYC Office.*

*Dancing to
Red House Groove Band*

SAILING INSTRUCTIONS

The Organising Authority is the Royal Burnham Yacht Club (RBYC).

The Club, the Officers, Members and Employees bear no responsibility for accidents, damage or injuries to boats or their personnel in any way or from any cause during or related to Races organised by the above defined Race Committee.

Attention is drawn to ISAF RRS 4 (Decision to Race).

1. RULES Racing will be governed by the Racing Rules of Sailing 2017-2020 (RRS), the prescriptions of the RYA, the Rules of the One Design Classes, the Crouch Harbour Authority Bye-Laws, the Notice of Race and these Sailing Instructions.

2. CONDITIONS OF ENTRY

General The safety of a boat and her entire management, including insurance, shall be the sole responsibility of the owner/person in charge who must ensure that the boat and crew are adequate to face the conditions that may arise in the course of the race. Neither these Sailing Instructions nor any inspection of the boat or the provision of safety boats limits or reduces the absolute responsibility of the owner/person in charge for the crew, the boat and her management. The race organisers shall not be responsible for any loss, damage, death or personal injury howsoever caused to the owner/person in charge or crew as a result of their taking part in a race or races. Moreover, every owner/person in charge warrants the suitability of the boat for the race or races and that the boat contains at least the minimum specified safety equipment detailed in class rules.

Insurance Each boat shall have a valid third-party insurance of not less than £2,000,000 in force for the duration of all races sailed under these Sailing Instructions, for which she has entered.

Compliance with Class Rules, Measurements and Rating Certificates – see RRS 78

Racing Fees and Entry Forms: The owner of each boat competing must have completed the appropriate entry form, and paid the prescribed race entry fees. For use of entry, an on-line form is available on the RBYC website www.rbyc.org.uk

Identification on Sails Under exceptional circumstances and provided that Class Rules allow, the race committee may permit a boat to use sails carrying an identifying number other than that required by RRS 77 and Appendix G.

Eligibility Races are open to any member of a yacht club recognised by the RYA (or another National Sailing Authority).

3. **NOTICES TO COMPETITORS** Notices to competitors will be posted on the 'Immediate' Notice Board adjacent to the quay door of the RBYC.

4. **CHANGES TO SAILING INSTRUCTIONS** Any changes to the Sailing Instructions will either be posted on the Official Notice Board at least one hour before the race, or by communication (which may be orally) with each competitor afloat before the Warning Signal.

5. **SIGNALS** Signals made ashore will be displayed on the flagpole near the Race Box or the Race Box Platform.

6. **SCHEDULE OF RACES** Races are scheduled as shown in the regatta programme. Times shown are the scheduled warning signals. The first scheduled class to start may be shown flag 'F' (one sound) 10 minutes before the start of that class. The signal will be removed at the warning signal for that class.

7. **CLASS FLAGS** Class flags, used as Warning Signals, will be as shown below. The use of flags C and H as Class Flags is in addition to their unchanged meanings in RRS – Race Signals.

Dragons	D
RCOD	C
RBOD	V
RS Elites	H
Hunter 707s	NN7 (Naval Numeral 7)
Squibs	NN9 (Naval Numeral 9)

8. **RACING AREA** Club line and the Rivers Crouch and Roach.

9. **THE COURSE**

Course to be sailed The courses will be taken from the 2017 RBYC/RCYC series course cards or using laid racing marks.

Display of Course The course to be sailed will be indicated by the letters displayed on the Race Box Platform no later than the Warning Signal for that class.

10. MARKS

Definitions The Racing Marks are as defined on the Course Card.

Inner Limit Mark When the Start is by Committee Boat, an Inner Limit Mark may protect it. At no time shall boats sail between the Committee Boat and the Inner Limit Mark. The Race Officer may, at his discretion, lay limit marks on the RBYC Start Line.

11. THE START (*Starts will conform to RRS Rule 26*).

Starting Races will be started with the Class Flag being displayed, as a warning signal, 5 minutes before the Start Signal, the Preparatory Signal (P, Z or Black Flag) will be displayed 4 minutes before the Start Signal and removed 1 minute before the Start Signal. The Class Flag will be removed at the Start. Flags on all starts may be accompanied by sound and/or light signals.

Absence of a Class. Where a class is not racing the race committee may omit all start signals for that class and display flag "F", with or without a sound signal, at the scheduled start time of the class not racing. This signal will be removed at the warning signal for the next class.

Starting (and Finishing) Line – Club Fixed Line The Starting and Finishing Line at the RBYC is defined by two posts in transit on the south shore opposite each club. In the absence of one of these posts, the Line will be defined as between the remaining post on the south shore and the southern-most post on the north shore. (The transit of the two posts on the north shore is a guide only).

Keeping Clear Boats whose Preparatory Signal has not been made shall keep clear of the starting area (an area of 50 metres either side of the Starting Line) and of all boats whose Preparatory Signal has been made.

General Recall When at the Starting Signal the race committee is unable to identify boats on the course side of the starting line or to which rule 30 applies, or there has been an error in the starting procedure, the race committee may signal a general recall (display First Substitute with two sounds). The warning signal for a new start for the recalled class shall be made one minute after the First Substitute is removed (one sound), and the starts for any succeeding classes shall follow the new start.

12. CHANGE OF COURSE AFTER THE START (*RRS 32 is amended*)

Shortening Course at Finishing Line When Flag S is displayed, with two sound signals, at or near the Finishing Line, it will have the following meaning for all classes (where Flag S is displayed over a Class Flag this instruction will apply to that class only): The leading boat will finish when she crosses the designated Finishing Line and all other boats will finish when they do so having sailed the same course.

Shortening Course at a Mark When Flag H is displayed, with two sound signals, from a vessel flying the Club Burgee near a mark of the course, it will have the following meaning for all classes (where Flag H is displayed over a Class Flag this instruction will apply to that Class only): The course is shortened and this is the last mark of the course. Pass it on the required side and sail to the designated Finishing Line, having first sailed the same number of laps as the leading boat, and finish.

When Flag S is displayed, with two sound signals from a vessel flying the Club Burgee near a mark of the course its meaning is as in the RRS – Race Signals.

Shortening Course other than at Finishing Line or Mark A vessel flying the Club Burgee, which is authorised by the Race Officer, may finish the race at any time for improving sailing and/or safety, the instruction for which may be given orally and shall be followed at all times. Where possible this instruction shall be accompanied by Flag H with two sound signals. (Where Flag H is displayed over a Class Flag this instruction will apply to that Class only). The course is shortened and the race will be to the designated Finishing Line, having first sailed the same number of laps as the leading boat, and finish. The finish line is to be crossed from the direction of the last mark.

13 THE FINISHING LINE – see SI's 11.3 and 11.4 above

14. TIME LIMIT Time limits will not apply.

15. PROTESTS Protests shall be written on forms available from the Race Officer and delivered to the Office or to the Race Officer within one hour after the time of the last boat's finish unless the Race Officer decides to allow a longer period.

16. SCORING - (RRS 89.3 is amended).

Scoring for individual classes shall be in accordance with RRS A2 Low Points system. Two races are required to constitute a series.

If four races are completed, a boat's series score shall be the total of her race scores excluding her worse score.

17. ALTERNATIVE PENALTIES – *(RRS 44.1 and 44.2 are amended)*. A one turn penalty rule (a turn in the same direction which includes one tack and one gybe) will apply to all classes.

18. HAULING OUT; MAKING FAST; ANCHORING. *(RRS 45 is amended)*. RRS Rule 45 will apply EXCEPT: A boat shall be afloat and off her moorings at her **WARNING** signal.

19. OTHER REQUIREMENTS WHEN AFLOAT

Personal Buoyancy RRS 40 will apply. Boats competing in keel boat classes are required to carry a minimum of two currently dated hand held distress flares.

Safety Equipment Any boat found deficient in safety equipment according to the rules of their Class during a race or during a spot check will be considered to have infringed Rule 1 of these Sailing Instructions.

Moored vessels A boat racing that collides or causes a collision with a moored vessel shall report this in writing to the Race Officer within the Protest Time Limit, and protest or retire from that race. The owner/person in charge shall report the collision to the Crouch Harbour Authority, Channel M1 on VHF or 01621 783602 or mobile 07903 132644. NB: A moored vessel includes its mooring buoy and any other items attached including but not limited to tenders, fenders and other items attached to the vessel.

VHF Radio The organising authority strongly recommends that all day boats/keelboat competitors carry a VHF radio and maintain a listening watch on Channel 37.

20. DECLARATIONS AND RETIRING Declarations are not required. From the moment a race starts, it is the responsibility of the owner/person in charge who retires to advise the Race Officer without delay, and in all cases within the Protest Time Limit.

21. TROPHIES Trophies will be awarded in the Royal Burnham Yacht Club on Monday afternoon as soon as practicable after racing is completed.

Trophies

Royal Burnham One Designs

Whitsun Monday Race - President's Cup

**Whitsun Weekend 3 days - Georgina Kennedy Memorial
Trophy**

Royal Corinthian One Designs

Nada Trophy

RS Elites

Whitsun Weekend Trophy

Dragons

The North Sea Y.C. Paper Weight

Squibs

The ACE Trophy

Hunter 707s

Cat Class May Tankard

Glassware for first, second and third in each class